

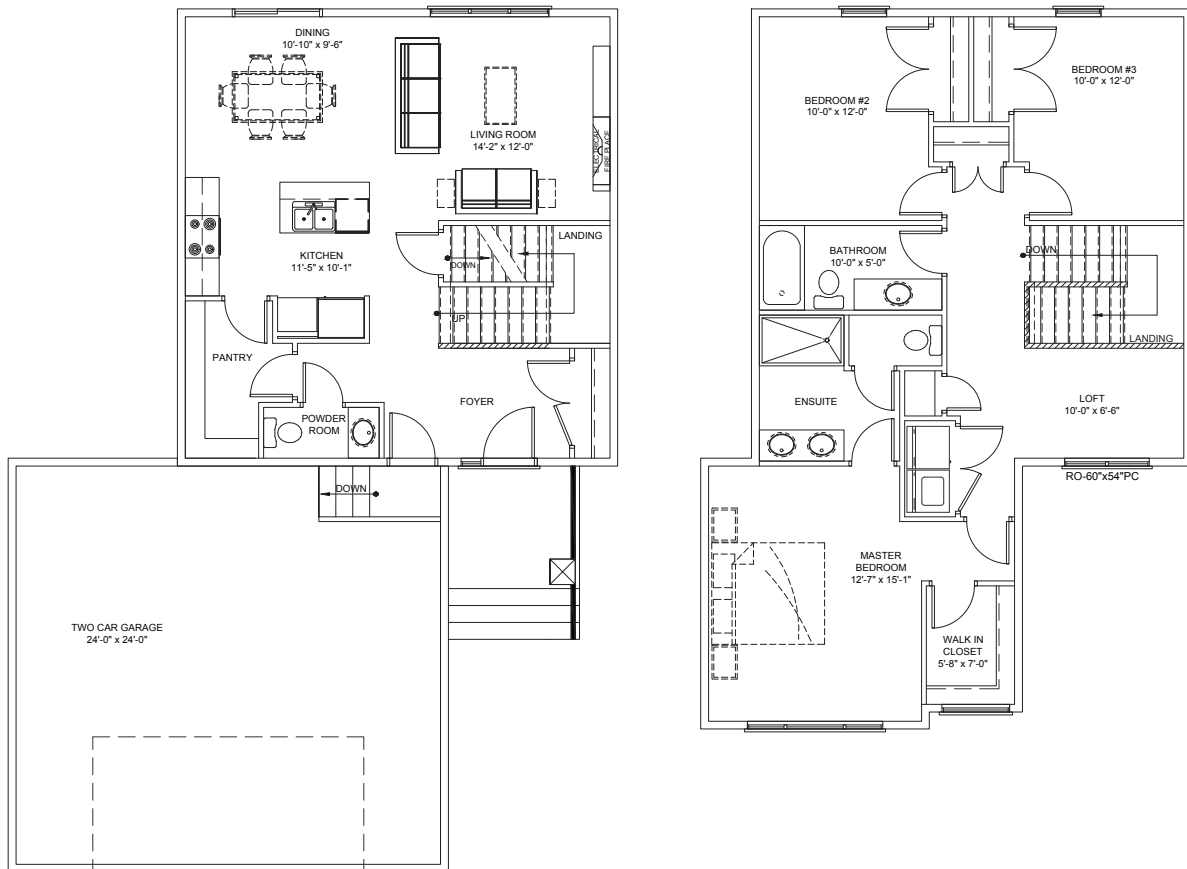
GRAYLING

3 bedrooms + loft

2.5 bathrooms

2 car garage

Plan width: 36'



FOR MORE DETAILS ON PLANS AND PRICING, CALL 204.295.4441.

Schulz Homes reserves the right to change specifications, plans or features without prior written notice. Drawings may vary and are an artist's conception. Square footage measurements are based on plans at time of pricing.